

EN MONOCHROME

à Andrea Young

André CORMIER

Intensité
silence

Hauteur
silence

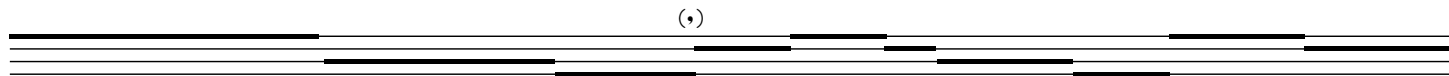
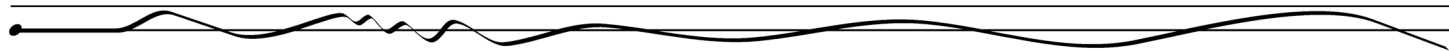
Timbre
silence

timbre 1
timbre 2
timbre 3
timbre 4

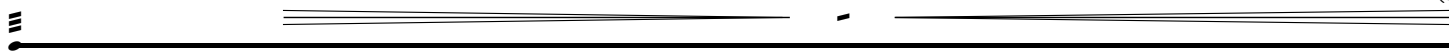
Durée
silence



p < *sf* *p* *sf* *pp* < *ff* > *pp* *p* < *sf* *p* *sf* *p* *ff* > *p*



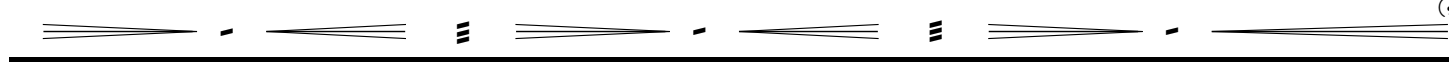
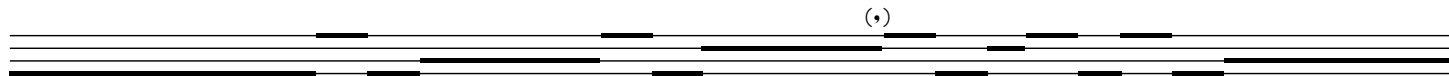
(intensité variable)



mf



p < *f* > *pp* *sf* *sf* *sf* *sf* *pp* < *ff* > *pp* < *f*



ff > *pp* *ff* > *pp* *ff* > *pp* *ff* > *pp* *ff* > *pp*

